



Sacramento Swainson's Hawks

Friends of the Swainson's Hawk

Sacramento Audubon

September 21, 2017

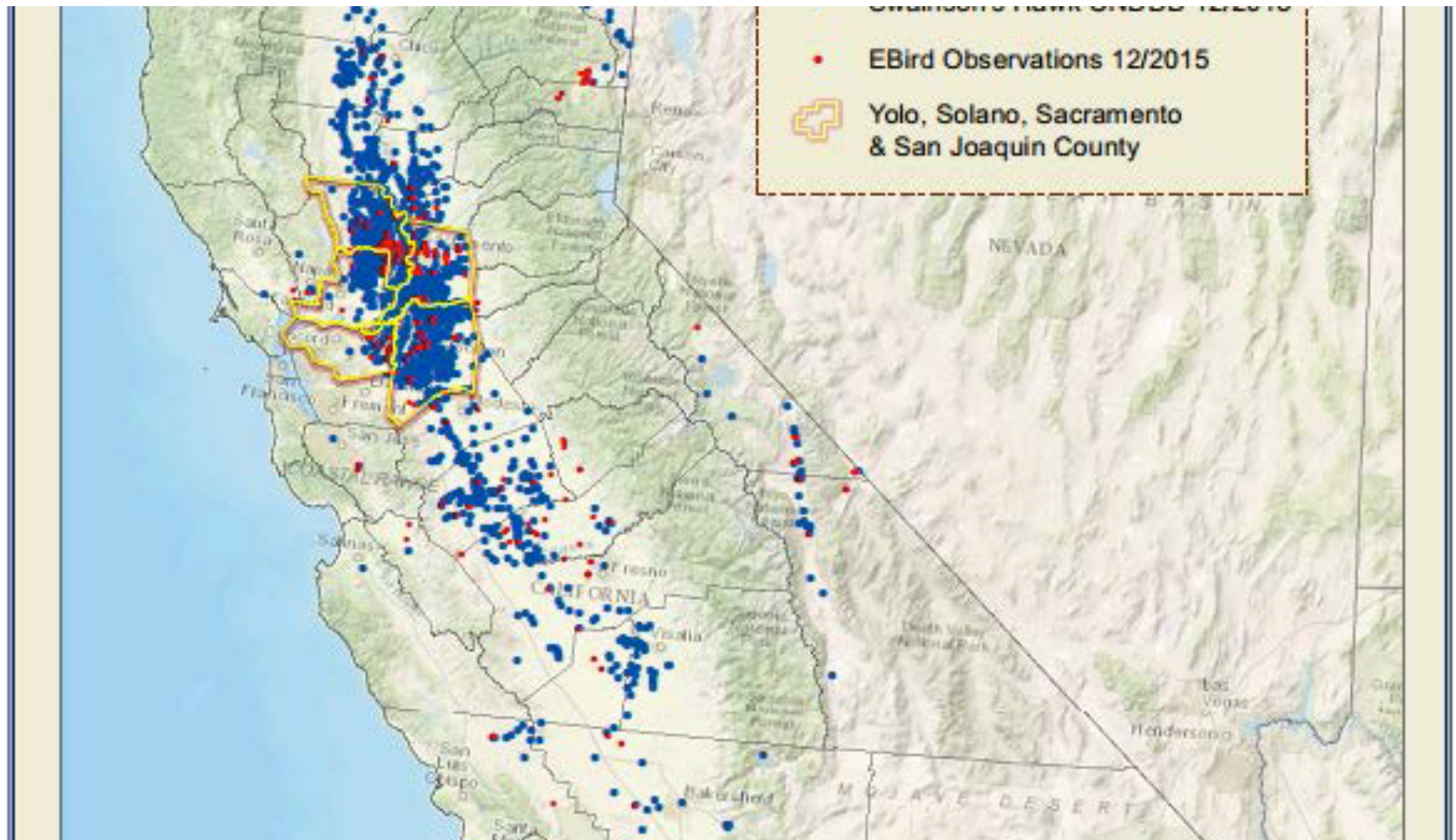
SWHA in Sacramento -

- Central Valley – 2,000 nesting pairs; 70-80 percent of the Central Valley population of nesting Swainson's Hawks is in four counties: Sacramento, Yolo, San Joaquin and Solano.

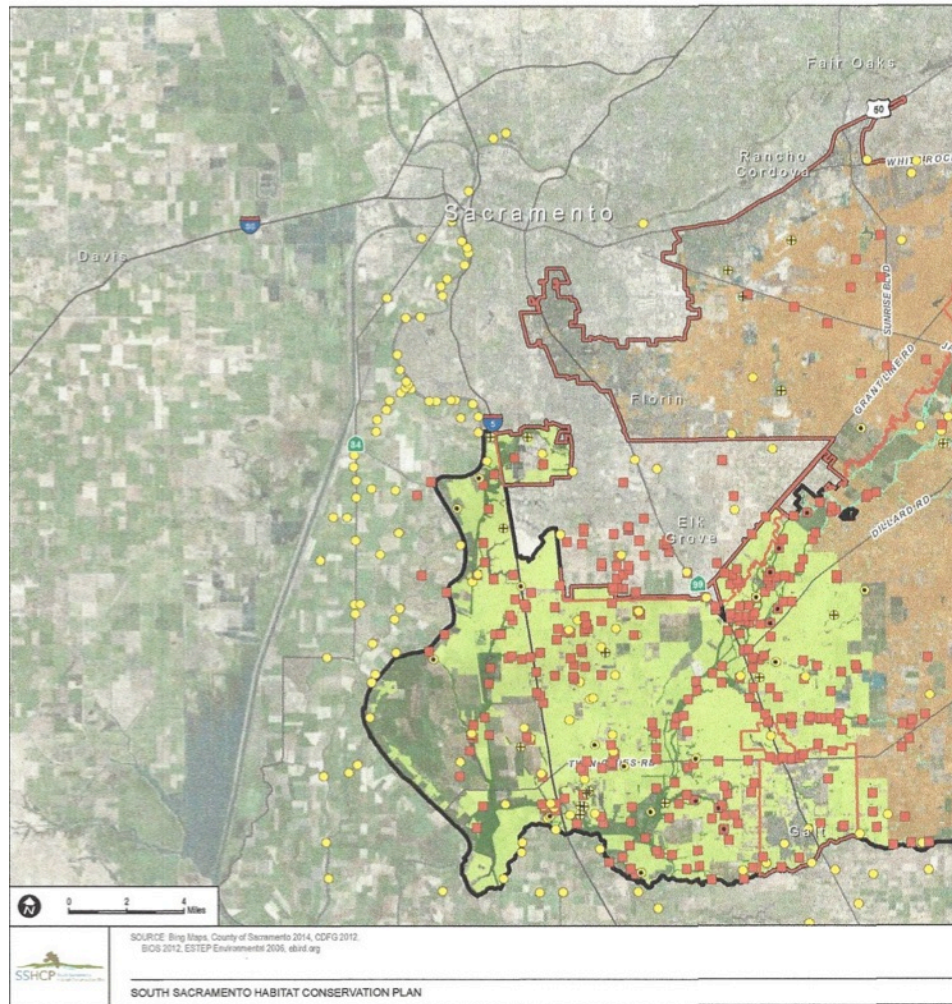


CDFW: Status Review of Swainson's Hawk in California

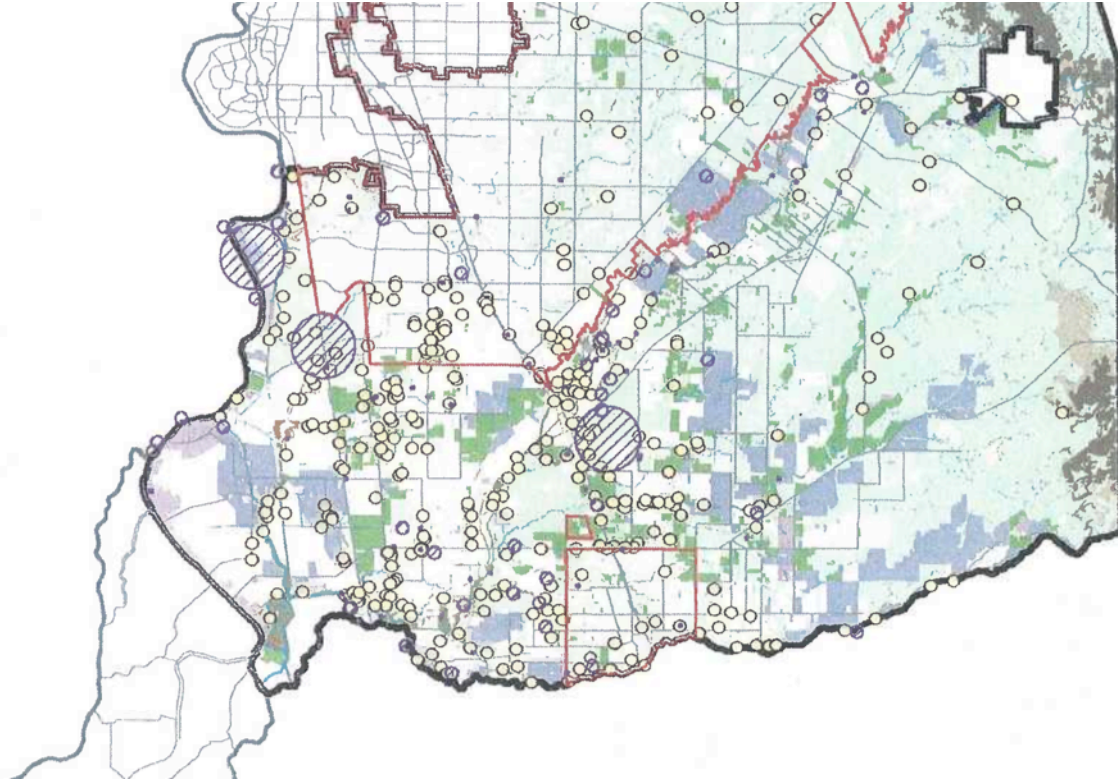
April 11, 2016



SSHCP Map of SWHA Occurrences



South Sacramento HCP Area



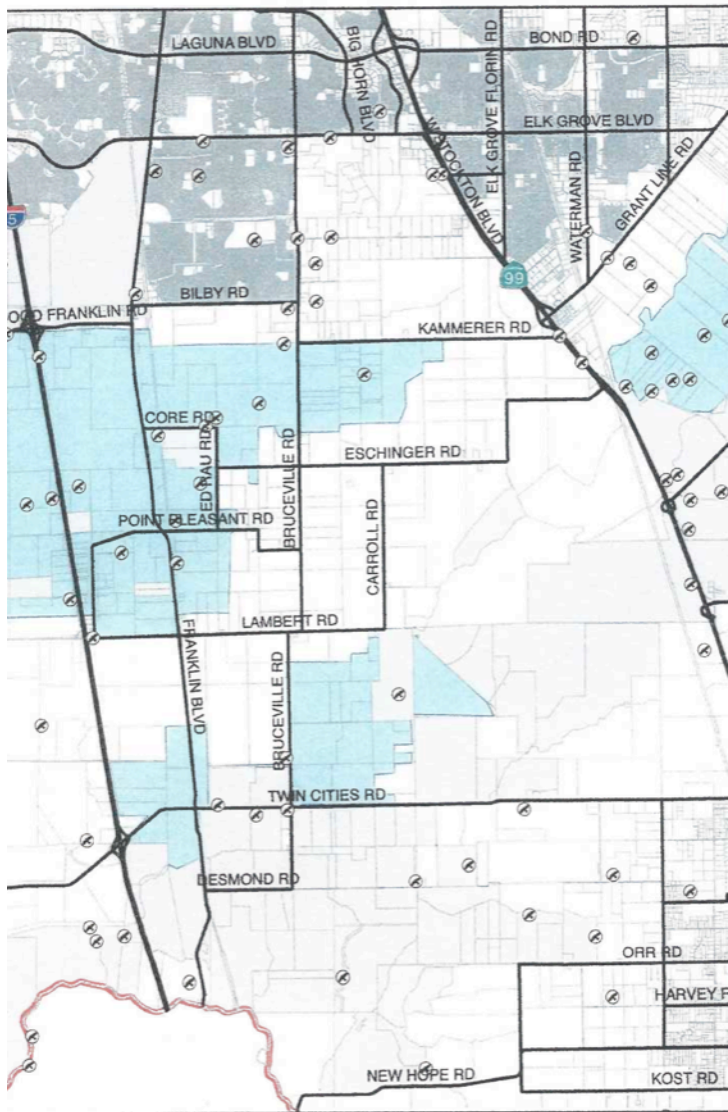
Sacramento County SWHA Nesting

- - Over 300 documented active nesting territories in South County (SSHCP)
 - City of Elk Grove 14 – Estep 2006 survey
 - City of Rancho Cordova about 13 — Estep 2009
 - City of Galt about 9
 - Other Inside USB - ?
 - Outside USB- 188
- North Natomas 56-65
- Other City of Sacramento ?
- Rancho Murieta Folsom ?



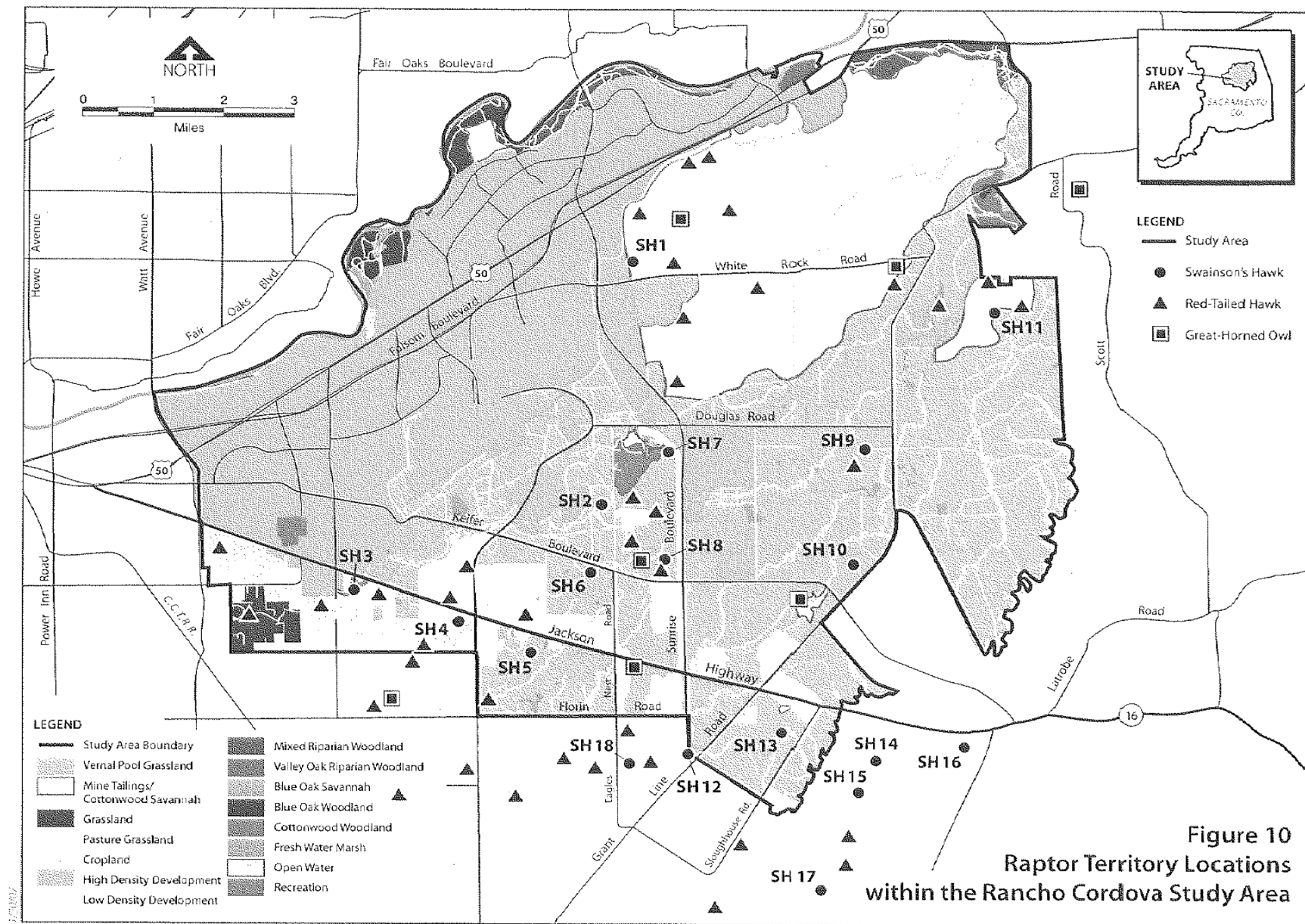
SSHCP Challenges

- Elk Grove has a separate mitigation program and seeks to grow southward on farmland
- HCP governance is by local governments
- Suitable upland forage for Sandhill Cranes and Swainson's Hawk is limited especially if sea level rises with climate change.
- Nest trees not protected from removal for road expansion/maintenance outside USB.

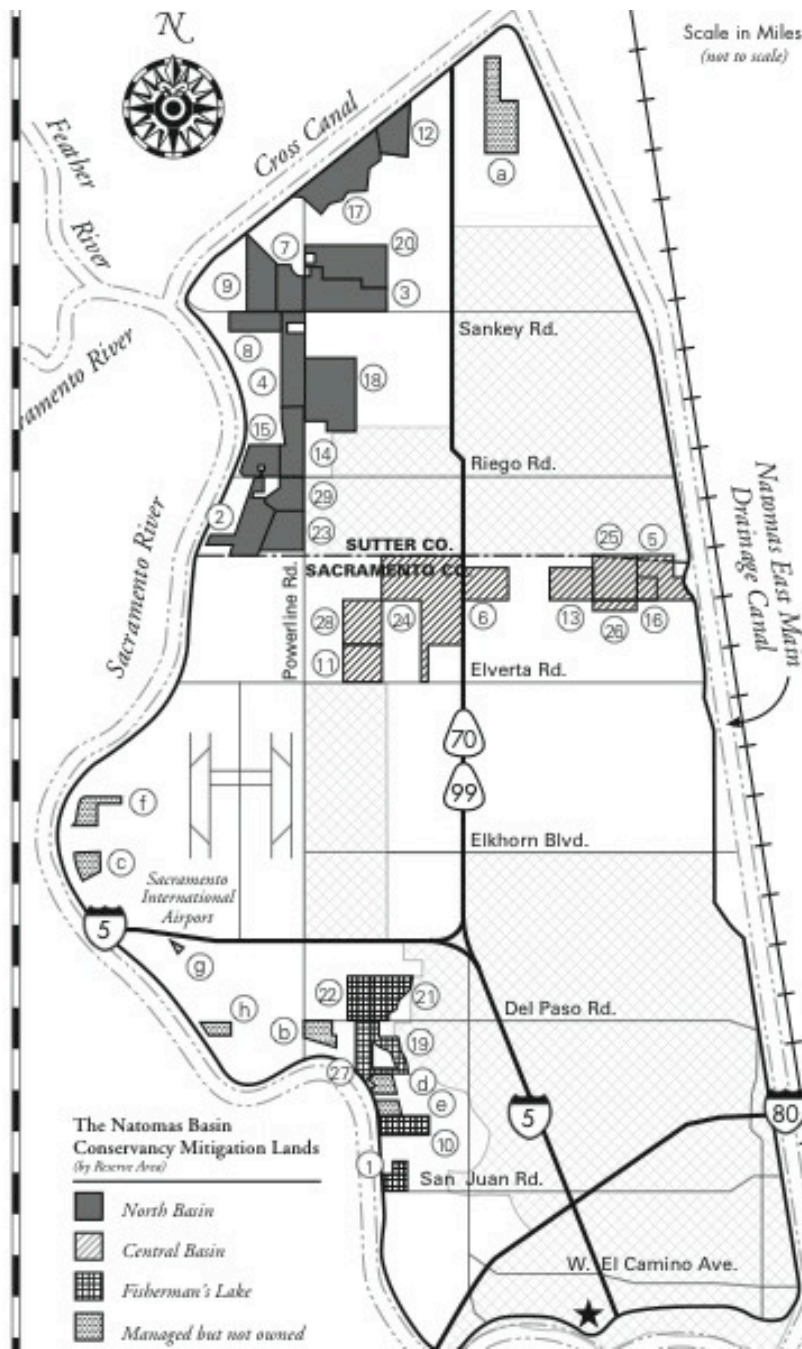


Elk Grove, Suitable Mitigation Sites for Waterfowl





SOURCE: Modified from EcoSystem Sciences, 2004.



Natomas Basin Conservancy

**Mitigation Ratio .25:1
for Swainson's Hawk
foraging habitat.**

Other Natomas Challenges

- Mitigation for Greenbriar located next to airport and outside NBC management
- Sacramento County pushing new development in North Natomas outside HCP take area – HCP limited to 17,500 acres
- “Swainson’s Hawk zone” shared with SMF
- SMF SWHA fatalities 2013-2015 = 11 (from average of 1 or less to average of more than 3 per year)

Thank you Sacramento Audubon

- Find us on Facebook
- FOSH & Audubon are members of Habitat 2020



www.swainsonshawk.org

Photo by Susie Nishio